



# EFREI - École Française d'Électronique et d'Informatique Villejuif - Paris

## PROFILE

### Efrei dates and facts

Created in 1936, EFREI initially specialised in the new technology of the time: radio electricity. Since 1957, EFREI's engineering degree has been recognized by the only French engineering accrediting board, the CTI (Commission des Titres d'Ingénieur).

A remplacer par :

EFREI has continuously adapted its curriculum to technological evolutions from electronics in the 1960s to computer science today following the invention of the microcomputer in 1972 by EFREI graduate André Truong.

### Academic focus

The EFREI engineering degree is based on an initial three-year undergraduate program leading to a Bachelor degree in mathematics and information technology in partnership with the University of Marne-La-Vallée. The final two years are considered the engineering cycle and lead to a Master degree in Engineering that confers the official title of engineer. EFREI now also offers a work-study program for third-year students.

The undergraduate program provides a solid education in scientific and technical fundamentals as well as management, communication and languages. The engineering cycle offers students 7 majors (specified below) as well as an Engineering- Management degree in collaboration with the grande école Audencia Nantes.

Our Master program prepares students for a large spectrum of professional responsibilities in technological domains such as telecommunications, networks, web services, multimedia, wi-fi, e-business, information systems, wireless and mobile communications, data warehousing and data mining, DBA, real-time systems, embedded systems... Nearly all organisations use IT today.

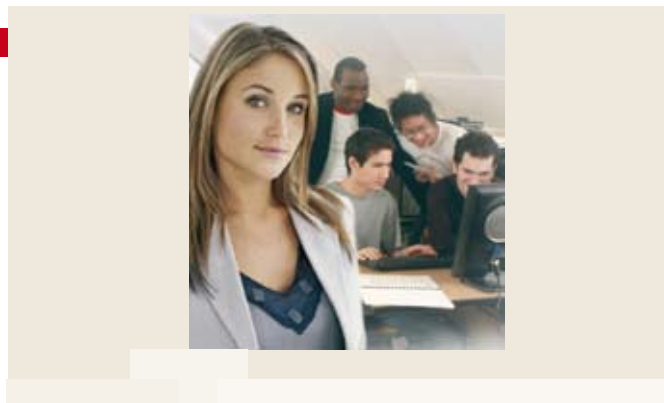
### Major Degree Programs:

Information Systems (entirely in English) - IT & Finance  
Telecommunications & Networks - Software Engineering - Robotics - Imaging & Virtual Reality

### Recherche

**EFREI conducts research projects in collaboration with start-up incubator IncubAlliance.**

- Decision-Making Modeling for Software Development Processes
- Information Systems Conception and Modeling
- Knowledge Management
- Digital Imaging



Photograph provided by the institution

### Strengths

#### Academic excellence

- Excellent teaching standards
- 100% of science faculty hold PhDs
- Large number of business and industry professionals among faculty
- Small class size and individual tutoring
- Selective admission process

#### Our graduates

- 1,200 students on campus
- 170 faculty and staff
- Over 300 Master Degrees awarded each year
- International students account for 9% of engineering degrees awarded each year

### Location

A modern campus close to the center of Paris  
EFREI's campus is located in Villejuif, 15 minutes by metro from central Paris and a two-minute walk from a public transportation hub. Our green and modern campus covers 10,000 square meters and includes numerous facilities such as student union offices, a cafeteria, a start-up incubator, a media center, a student lounge, and large computer labs accessible outside class time.

## IDENTITY FORM

[www.efrei.fr](http://www.efrei.fr)

Precise name of the institution →	EFREI, Ecole Française d'Électronique et d'Informatique
Type of institution →	French Private Higher Education Institution Fully Accredited by the French Ministry of Education and the national Engineering degree accrediting board (CTI)
City where the main campus is located →	Villejuif-Paris
Number of students →	985
Percentage or number of international students →	13,17 %
Type and level of qualifications awarded →	Diplôme d'Ingénieur (National Engineering Master Degree )
French language courses →	Yes
Programs for international students →	Yes
Programs in English →	Yes
Registration fees / year (for information only) →	7500 euros
Postal address →	30-32 avenue de la République - 94800 Villejuif

